

East Princeton Gas Stations – Then & Now White's Shell Gas Rt. 140 & Beaman Rd.

Allen and Martha Slongwhite lived in a small house behind the current Captain Bob's on Rt. 140 from 1925 till 1940. Allen was a carpenter and traveled all over to find carpentry work. They built and opened a small two-pump Gas Station called White House retreat at the corner of Beaman Road, Rt. 31, and Rt. 140.



One pump was gasoline and the other was for kerosene, because at that time, there was very little electricity in Princeton, and people used kerosene to light and heat their homes.

There were 7 members of the Slongwhite family; Martha (the mother left), Gordon, Dot, Stanley, Donald, and Dutchy – father, Allen, must have taken this picture.

Based on the previous images, it is our conclusion that the White's Shell Station was at the left-corner of E. Princeton Rd, Beaman Rd, and Rt. 140, between the white rock and trees in this photo.



There were 3 other local gas stations in East Princeton before 1950.

Across the street from White's, early in the 30's there was a summer gas station run by the Gates Family.

Hubbard's Garage 106 Main St – Kwik Stop & Town Line Garage

Heading toward Worcester on Rt. 140 is Hubbard's Garage, built by John C. Hubbard in the late 1930's and later owned by Charles Hubbard. This garage repaired vehicles and sold Ford cars and trucks. But when John died of a sudden heart attack, Ford Motors awarded the franchise Sunnyside in Holden. Hubbard's Garage also housed one of Princeton's fire engines until the E. Princeton Fire Station was built, that section is now Kwik Stop.



Gas pumps and tanks were removed because of the insurance costs vs. amount of gas being sold was too high. For many years the Town of Princeton Land Fill was located behind the garage.



Whitcomb Post Office, Store and Gas – 78 Main St.



In the center of E. Princeton across from Gleason Rd. was the East Princeton Store built by John A. Mirick 1842-1877. Warren H. Whitcomb ran and renamed it to Whitcomb's Store from 1898 -1921.

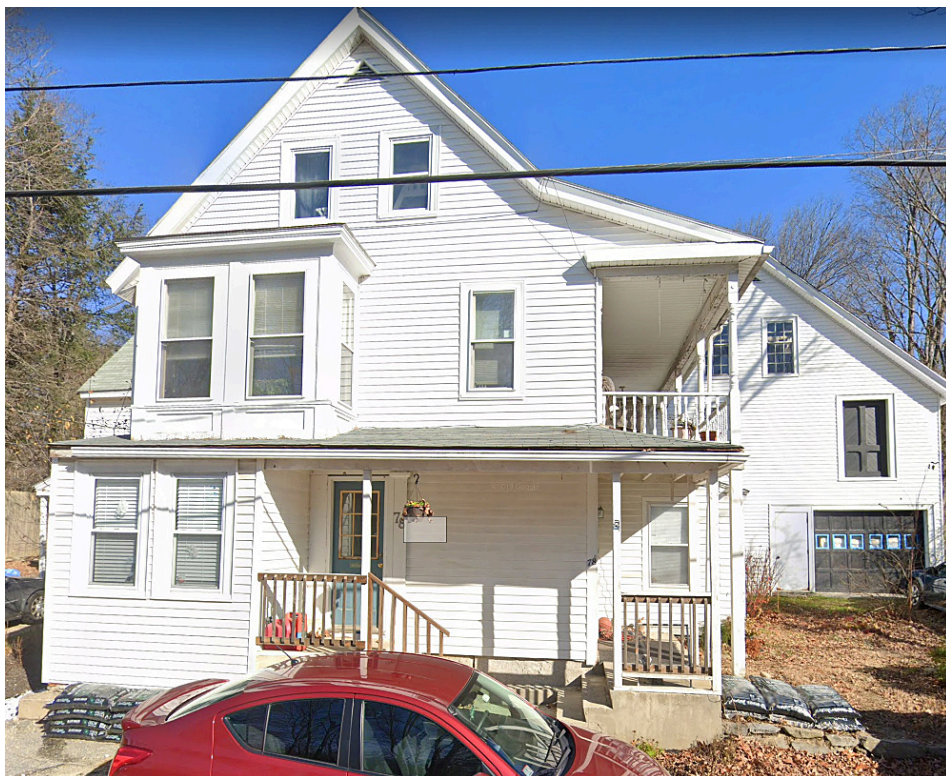
In the 30-40's, it had 1 gas pump.

On the right side, in the barn vehicles/buggies were serviced and eventually the left side became the Post Office.

It has had many owners since: B.H. Whenman-1925, Roy & Esther Williams -1939, Lester Sawyer -1949, and the last storeowners were C.B. & Olive Cadwell, who added a Package Store until it closed -1952 - 1969.



The PHS would like to thank Warren Thorell for sharing his remembrances of these locations.



Please share your remembrances and photos of these locations with us at: princetonmahistory@gmail.com

Please visit our website:

<http://www.princetonmahistory.org>

For more information about Princeton's history.