

.. SECOND EDITION ..

PRICE 10 CENTS.

Wachusett Mountain



Lake and Park

and other

POINTS OF INTEREST

REACHED BY THE

**GARDNER WESTMINSTER
& FITCHBURG
STREET RAILWAY.**



INTERIOR VIEW

.. OF ..

H. A. GOODRICH & CO.'S,

Fitchburg's

Greatest

Clothing Store.



THE PLACE TO FIND

Anything You Want

IN CLOTHING, HATS,
TRUNKS AND
FURNISHINGS.

Always a good place to trade.

149-151 Main Street.

Introductory.



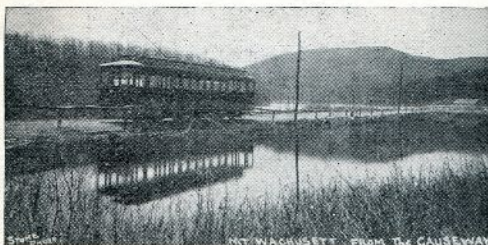
THE Object of this pamphlet and guide is to bring to the attention of our readers some of the many attractive and beautiful features of this picturesque region, together with the ideal way provided for reaching these resorts, where unbounded facilities exist for sightseeing and recreation.

The introduction of the trolley furnishes a most delightful means of traversing the hill country of Northern Massachusetts, and the half-hour



ride over the Gardner, Westminster and Fitchburg of itself constitutes a very pleasurable part of a day's outing.

This little book with its specially prepared illustrations can be obtained as a souvenir at the newsdealers in Fitchburg and towns in



this vicinity, or will be forwarded postpaid to any address on receipt of price, by

WILLIAM A. EMERSON, Publisher,
57 South Street, Fitchburg, Mass.

JENNISON PLUMBING CO.
FITCHBURG, MASS.

MANUFACTURERS OF PLUMBING MATERIAL
AND JOBBERS

PIPE EVERYTHING FITTINGS VALVES STEAM
FOR GAS and WATER WORK

Pipe Cutting to Sketch
 SUPPLIES FOR MILLS FACTORIES & ENGINEERS

DYNAMOS AND MOTORS
SHEET IRON GALVANIZED and BLACK
ELECTRICAL PLANK OPERATIONS FOR RAILROADS AND TRANSPORTATION
COPPER TIN PLATES AND METALS.

HEATING BY STEAM, HOT WATER, AND HOT AIR.

A GOOD PLACE TO
 BUY GOOD SHOES.

W. C. GOODWIN,

169 Main St., Fitchburg.

Grand Union Tea Co.

Dealers in **TEA and COFFEE.**

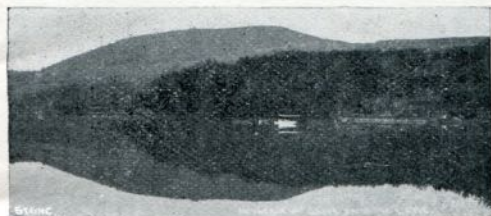
220 Main St., Fitchburg.

You see Our Wagons Everywhere.

Wachusett.



Wachusett Mountain rears its rocky and wooded sides more than two thousand feet above the sea, and is the highest point of land between the coast and the Connecticut River.



The Wachusett region comprises a large area of rough, hilly, broken, but fertile land, and constitutes one of the finest mountain sections of the state.



Chamberlain Huntress Co.

THE RELIABLE DRY GOODS STORE.

.. SELL ..

Dry Goods, Carpets, ready-to-wear Millinery and Garments,

and every sale we make is sure to be a lasting advertisement, for we guarantee satisfaction in every instance. Depend upon it, you are sure to find here at all times the latest styles, and are only asked the lowest living prices.



4 HITS

The Old Home Ballad,
DOWN IN OLD BAY STATE.

BY RUSSELL AND RUSSELL.

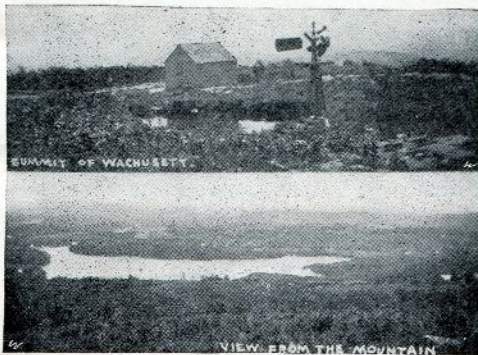
"The Big Coon Song Hit,"
WAS YOU ALWAYS CHOCOLATE?

A Charming Waltz Song,
THAT LITTLE MAIDEN.

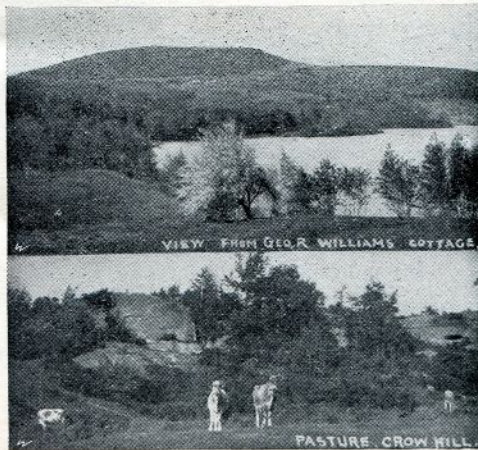
The Greatest Military March of the Age,
"TACTICS."

FOR SALE AT UP-TO-DATE MUSIC STORES.

It has been called the laboratory of the state. On every side, as far as the eye can reach, the landscape is spread out like a map, from the seashore on the east to the New



Hampshire hills and mountains on the north and west. Including Little Wachusett and Pine Hill, it constitutes a range which,



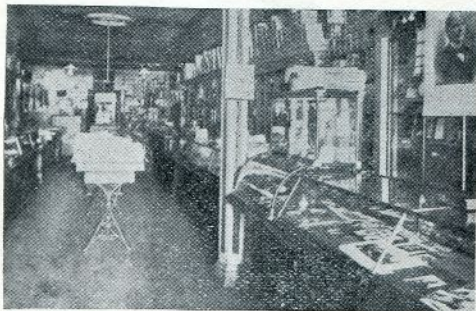
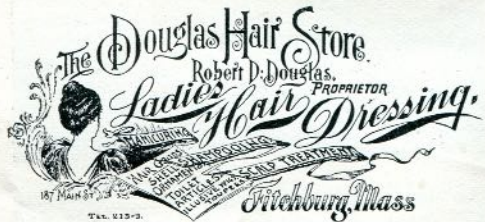
viewed from the south and east, presents a picture of rare beauty and loveliness.

Anyone seeking for a retreat amidst wild



SPECIALISTS IN LENSES
FOR THE EYES.

195 Main St.



J. E. THOMPSON,
Stationery, Blank Books and Fancy
Goods. Newsdealer and Subscription Agency.

118 MAIN STREET, FITCHBURG.

and picturesque scenes far removed from the heat and turmoil of city life, may find it all here, in the quiet grandeur of old Wachusett.



In the years that are past its praises have been sung by poets and lovers of nature, who have made pilgrimage to its summit. Our own Whittier and other lesser poets have immortalized it in verse. Thoreau, the philosopher of nature, for several days in the summer of 1843 camped on the mountain's summit and gave an account of his walk thither



from his home in Concord. Helen Hunt Jackson found Mount Wachusett a congenial summer home, and most of her work as an author was performed here. In 1876 her pen picture of "Hide and Seek Town" in Scribner's brought many an inquisitive traveller to old Princeton and Wachusett.

Every Graduate ..

Since 1897 has been given a good position by the

Fitchburg Business College,

WANTED—Bright, active, and ambitious young people to fill good positions. . . .
145 Main St.,
Fitchburg.

D. M. DILLON,

Steam Boiler Works,

FITCHBURG, MASS.

W. K. WILEY.

F. H. FOSS.

WILEY & FOSS,

Masons and Contractors.

Office, cor. Central and Brook Sts.,

Long Distance Telephone 428-12.

FITCHBURG.

J. S. PIERCE & CO.,

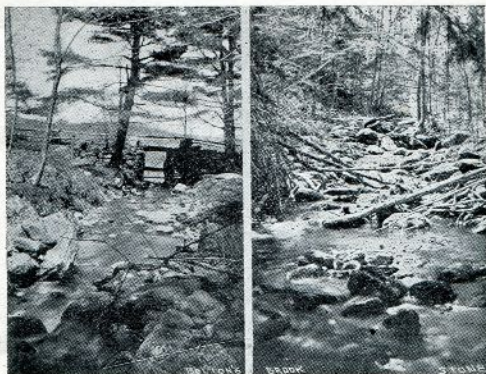
Real Estate and

Insurance. ❀ ❀

162 Main Street,

FITCHBURG.

Mrs. Dwinell's recently published poem, "Outing Inn," has created an additional interest among summer vacationists, many of whom will no doubt make Wachusett their objective point this summer.

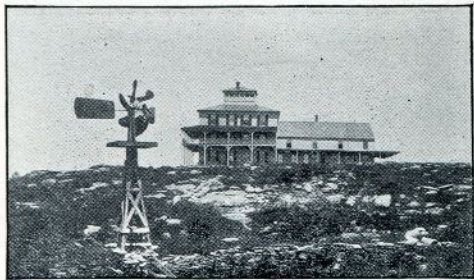


Wachusett State Reservation.

Wachusett Mountain, comprising 1,380 acres, has been purchased lately by the state for a public park. Its wooded sides are to be improved by clearing up the dense underbrush, and by a proper system of forestry, made more beautiful. It is to have an ideal deer park of 300 acres on the southwesterly side of the reservation, with Echo Lake for a watering place. It is also proposed to stock Echo Lake and Bolton's Pond with trout. The care, protection and maintenance of the reservation is in the hands of three commissioners, Col. A. J. Bullock of Worcester, Harold Parker of Lancaster, and T. L. Harlow of Gardner, and an annual appropriation of several thousand dollars for improvements will be expended under their direction. This work is in the hands of Guy H. Chase, the energetic young reservation superintendent, who is already making commendable progress in the improvement of the reservation as a whole. The clearing around Echo Lake furnishes a good example of the great improvement the reservation will show when the woods on the side slopes with their great variety of trees are cleared

.. SUMMIT HOUSE .. Mount Wachusett.

A. L. HARRINGTON, Prop'r.



2015 feet above sea level.

*Stage Connections with Electric and Steam
Railroads.*

TERMS REASONABLE.

The Right Place.



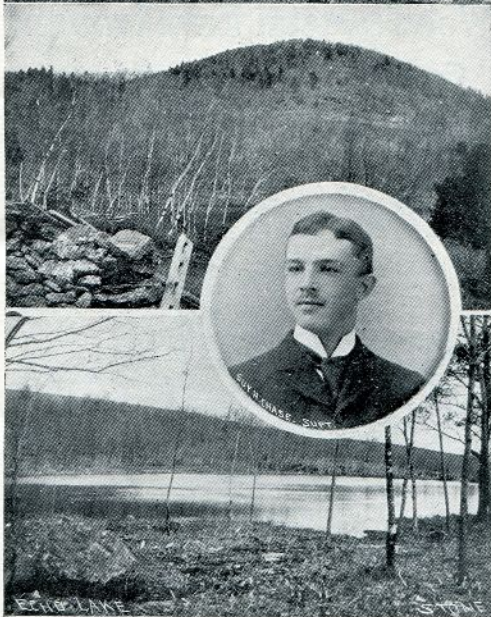
*When you want a good Portrait
or Photograph of yourself, family
or friend, go to ❁ ❁ ❁ ❁ ❁*

Peterson & Reardon's,

386 Main St., Fitchburg.

We guarantee to please you.

of underbrush and tanglewood of fallen trees, and given a chance to develop into



dense forests. A change is about to be made in the road to the summit, at the "Ox Bow," so called, to do away with the sharp curve and steep grade at that point. The charter for a railway to the summit over the State

HENRY ALLISON & CO.,

♦ ♦ **Insurance** ♦ ♦

Rooms 11 and 12, Safety Fund Bank Building.

229 Main Street, Fitchburg.

1872 **C. O. STONE,** 1902

Manufacturer and Dealer in all kinds of

Wood & Metal Eave Troughs

Conductors, Ladders, Pumps, and
Chimney Tops.

Steam Mill, Shop and Office, near Depot, Gardner.
TELEPHONE CONNECTION.

CARRIAGES ❁ ❁ ❁

from **Wachusett Park**



.. TO THE SUMMIT ..

and other places of interest.

Tel. 9025-2.

PETER LARKIN, Prop.

reservation has been granted, and it is to be built as soon as the surveys are completed and a route decided upon. A new and larger observatory will no doubt then be built.

The present observatory is supplied with a new telescope of high power and good field glasses. It is also equipped with a



map carefully constructed on geodetic principles, showing cities, villages, ponds, streams, hills, mountains, etc., for 50 miles around.


There is now a good carriage road from the Lake to the summit, and many make the ascent in this way.



The Double Boulder.

This curiosity of nature is located in a pasture on the northerly slope of Wachusett. It consists of two immense boulders lying one upon the other, the upper one so firmly placed in position as to be immovable. They are each about six feet in diameter, and together

Lyons, Davis & Co.

 **Clothiers, Hatters,
and Furnishers.**

158 Main Street, Fitchburg.

W. J. LYONS.

NELSON W. DAVIS.

Modern Service.   Medium Prices.


TELEPHONE.





MANSFIELD, the Fitchburg Florist,
123 Charles St. Salesroom 115 Main St.

LATEST NOVELTIES AT THE
Fitchburg : Dry : Goods : Store,
DEPOT SQUARE.

WILLIAM A. EMERSON,

 **Designer,
Engraver,
Publisher,**

**Cuts Engraved, Books Illustrated
and Published.**

Prices reasonable.   Office at Residence,

57 South St., Fitchburg.

tions planned, and treaties made. Here Mrs. Rowlandson remained for some time, during her captivity, until she was ransomed. She was here when the Indians returned from



Marlboro, and was present at the grand pow-wow, both before and after the attack on Sudbury. The release of Mrs. Rowlandson was secured through the efforts of Mr. John Hoar, who bravely went among the hostile savages and secured her ransom after a good deal of ceremony and delay. It is said that King Philip was present but opposed the release of



the captive, and that Mr. Hoar was obliged to conciliate Quinnipin, the master of Mrs. Rowlandson, with a pint of rum, upon which he at once got beastly intoxicated.

In the summer of 1880 the field which contains Redemption Rock, where Mr. John Hoar paid Mr. Rowlandson's ransom, was purchased by his descendant, Senator Hoar, as a



M. A. COOLIDGE, Contractor ..

.. FOR ..

Complete Construction
and Equipment of ...

Electric Railways

129 Main St., Fitchburg.



relic of his ancestor's courage and diplomacy. Last summer the Senator deeded this prop-

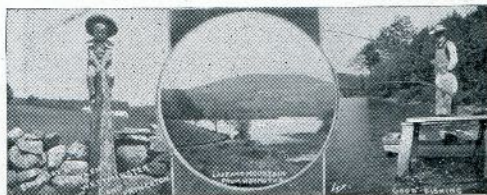


erty to his grand-nephew, John Hoar, son of the late Sherman Hoar, the only one of the family by the name of John.

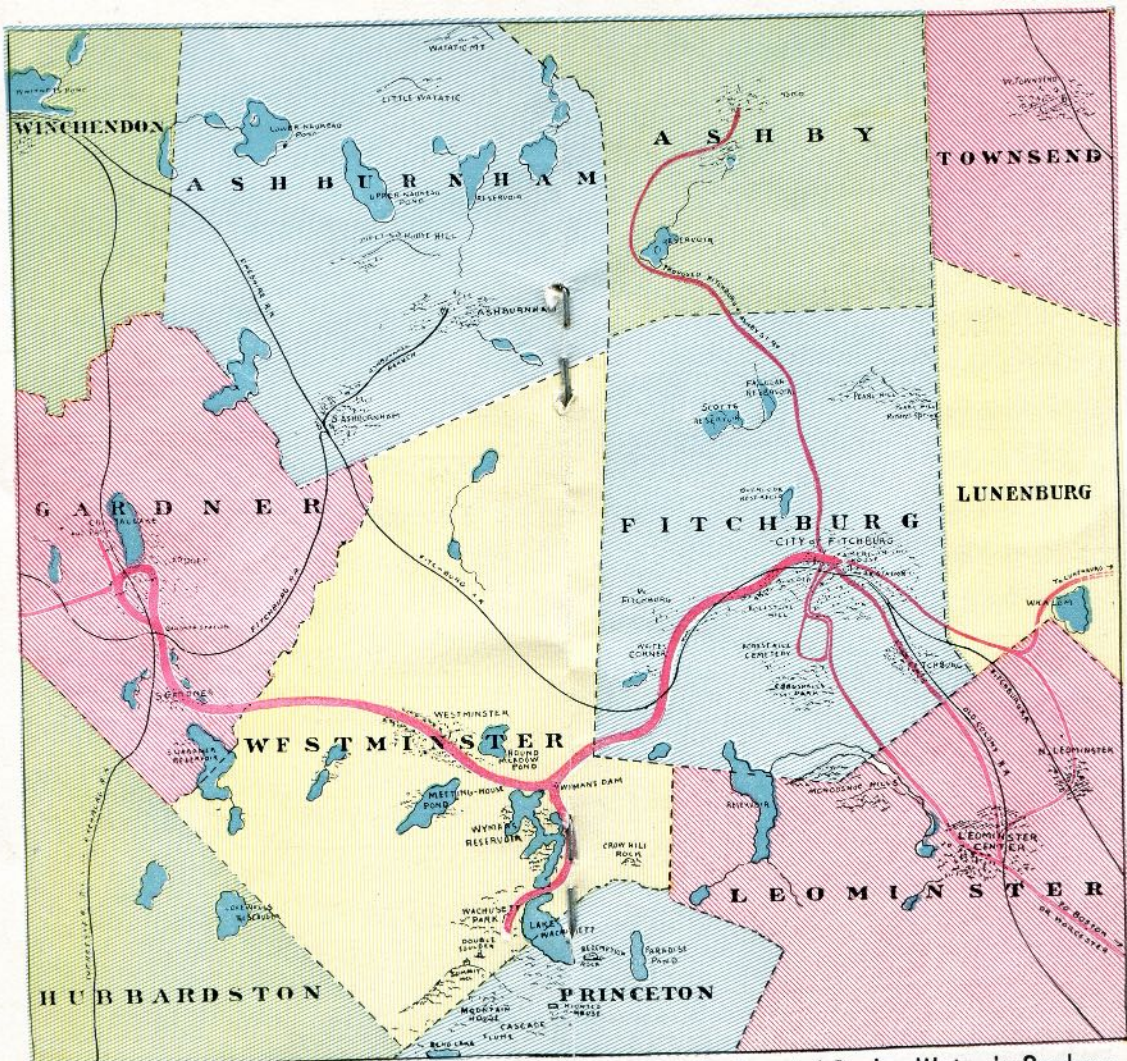
It is related that about the time of the Revolution a four year old daughter of one of the settlers wandered off and became lost in the Wachusett woods. People for



thirty miles around collected and for weeks searched for her, but without success. The child was never discovered and it was believed she had been carried off by Indians. Years after, two men on a trading expedi-



tion to Canada found living among the Indians a white woman who knew nothing further of her birth or parentage than that she once lived near "Chusett Hill."



Pearl Hill Mineral Spring,
 CHAS. F. WILSON, Prop. Fitchburg, Mass.
 TEL. 229-5.

Pure Carbonated Spring Water in Syphons
 Excellent for Table Use or Sick Room,
 Endorsed by Physicians.

Time Table.

FROM BOSTON—Excursionists leaving Boston early in the day have ample time to go to the summit of the mountain and return the same day. Trains of the Fitchburg Division, B. & M. R. R., leaving Union Station, Boston, connect with cars of the Gardner, Westminster and Fitchburg Street Railway at the American House, opposite the railroad station in Fitchburg, for Wachusett.



FROM BOSTON BY TROLLEY.—The trip can also be made by trolley via Boston elevated to Arlington, thence through Lexington, Concord, Maynard, Hudson, Clinton, Leominster and Fitchburg to Wachusett Mountain. This is an exceedingly pleasant and interesting way of taking a two or three days' outing with an over night or over Sunday stop at the summit.

The most direct trolley line from Gardner to Boston is via Fitchburg, Leominster, Clinton, Hudson and Maynard, thence through the historic towns of Concord and Lexington, through Arlington Heights, past Harvard college to Boston.

FROM WORCESTER—Starting from Worcester by 8 o'clock in the morning, with good connections along the line, the trip may be made by trolley, with an allowance of three or four hours on the Mountain, so that one may arrive back in Worcester early in the evening of the same day. Cars from Orange,

Athol, Templeton, Baldwinville, Otter River and East Templeton connect at West Gardner for Wachusett.

The Wachusett Park line connects with all main line cars from 6.38 a. m. to 9.38 p. m. Cars leave Wachusett Lake at 6.25 a. m. and 25 and 55 minutes past the hour until 9.55 p. m.

Crystal Lake Park line runs when travel demands. All main line cars run through to Whalom Park. Last car from Whalom Park 10.08 p. m., runs to Gardner after the entertainments.



Wachusett Park.

This ideal park, situated at the base of the mountain, and on the shores of charming



Wachusett Lake, is a place of great natural beauty, and since its purchase by the Gardner, Westminster and Fitchburg Street Railway Company has been cleared up and



greatly improved, making it one of the most attractive pleasure resorts in this section.

With the improvements which have been made and new features added it is becoming increasingly popular, and its use is called into frequent requisition for pleasure parties, picnics and social gatherings. In and around

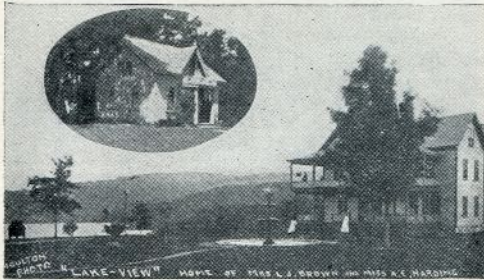
the grove there is every opportunity for sports and amusements, such as bowling, baseball, boating and fishing. It is but a short row across the Lake to the bathing



beaches. The large dancing pavilion is always available for entertainments, concerts or dances, without expense to patrons. On the grounds there is a well-conducted hotel and restaurant, and it is a celebrated spot for



"pout dinners." Single meals or party dinners can be furnished and by giving a few hours' notice to the manager large parties can be accommodated. Ice cream, soda,



cigars, candies, pop corn, peanuts, fruit, etc., always on sale.

Throughout the grove are rustic summer houses, seats, picnic tables, with swings and other attractions for the children.



Along the shores of the Lake numerous summer cottages have been built, and here



and there the white tents of camping parties show through the foliage of the groves.



Many of the farmhouses are occupied by summer residents, and summer boarders are likewise accommodated. The available build-



Fitchburg Trust Company

.. SAFE DEPOSIT BOXES ..



\$1.00 per year and upward.

Capital \$100,000. Interest allowed on deposits.

COTTAGE LOTS FOR SALE



Bordering on Beautiful Wachusett Lake,
at moderate prices.

A. L. WALKER,

LEOMINSTER, MASS.
Tel. 127-13.

23



ing lots overlooking the Lake are being taken up and more cottages will soon be built by business men from Fitchburg and neighboring towns, who find it an attractive as well as a convenient place for summer residence.





*Dependable Clothing
Always*

Prices as low as is consistent with good quality. Any age of man or boy from 3 up.

KIMBALL & CO.,

174-178 Main Street, Fitchburg.

Powell Bros.,

Dealers in

Coal and Wood.

Office, No. 2 Day St., Fitchburg.

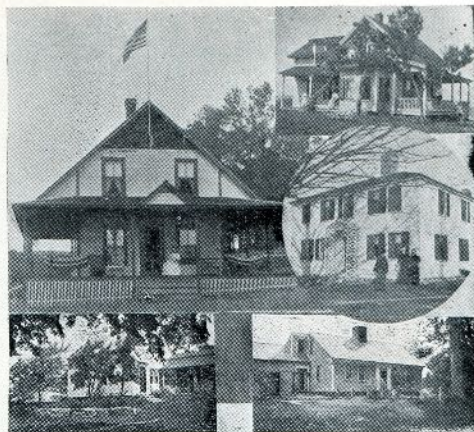
J. F. JOSEPH,

Dealer in

First - Class Provisions.

228 Main St., Fitchburg.

Telephone 144-3.



James & T. K. Ross,

.. Dentists ..

166 Main St., Fitchburg.

DR. JAMES ROSS,
DR. C. T. BEEDLE,

DR. T. K. ROSS,
DR. L. J. PARKER.



Our Specialties :

Porcelain Inlay Fillings.

Gold Crowns.

Bridge Work.

Telephone Connection.



Frank S. Stone,

❁ ❁ Pharmacist,

166 Main Street, Fitchburg.



When at Wachusett Lake



Have Your Tintype Taken

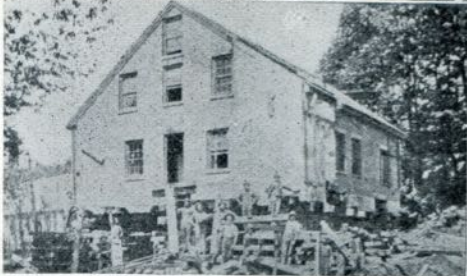
by

STONE, *The* Photographer.



A choice collection of Views
always on sale at the studio.





JOHN MORAN,
Building Mover and General Contractor.
 21 Cane Street, FITCHBURG.



JEREMIAH SHEA,
Dealer in Granite. A specialty of Dimension Stone
 and Bridge Work.
 Office and Quarries, Rollstone Hill.
 Residence, 578 Main St., Fitchburg.

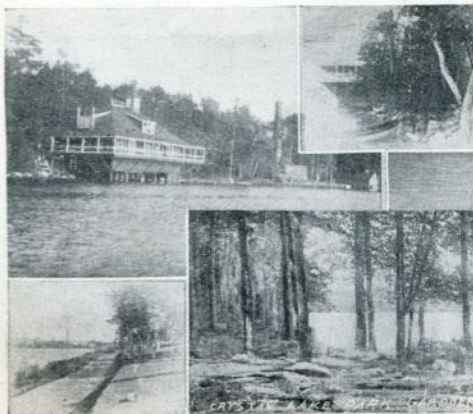


Rollstone Boulder.

This huge rock, fifteen feet in diameter and weighing nearly seventy-five tons, is located on the summit of Rollstone hill, four hundred feet above the valley.

It is of very different material from the granite ledge on which it rests, and is evidently a relic of the glacial period. According to Professor Hartwell ledges of the same composition, structure and appearance have been discovered in Bradford and Warner, N. H., and vicinity, "the probable home of this much visited boulder."

In order to prevent disintegration by frost the seams have been cemented, an iron band placed around it, and quite recently it has been moved intact to a place of temporary safety from the encroachments of the busy quarrymen.





COME IN AND SEE US.

One of the best known features of the
Wachusett region is the

Fitchburg : Sentinel.

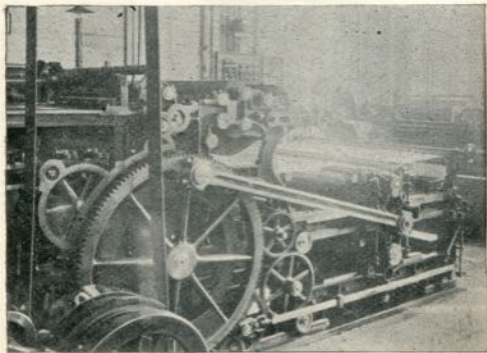
Established 1838. Daily and Weekly.

The local and general news. Best advertising medium
in its section.

Job Printing in all branches is a prominent
department.

SENTINEL PRINTING CO.

389 Main St., Fitchburg.



ONE OF OUR PRESSES.